

**EUREKA FORBES**  
Your friend for life



# USER MANUAL



**It lets me live life!**

Healthier is happier

**FORBES**

QUICK CLEAN DX

Powerful Daily Use Vacuum Cleaner.

Dear Customer,

Congratulations on purchasing your new, aesthetically designed Forbes Quick Clean DX. Welcome to the happy family of over 25 lakh owners of Eureka Forbes Vacuum Cleaners.

We always endeavor to bring you technologically superior appliances, designed to let you live life on your terms.

Forbes Quick Clean DX, a powerful daily use vacuum cleaner gives you immense cleaning power. Its high suction and amazingly low power consumption makes it an ideal cleaning device.

To always ensure the optimal functioning and performance of your product, we would like to advise the following:

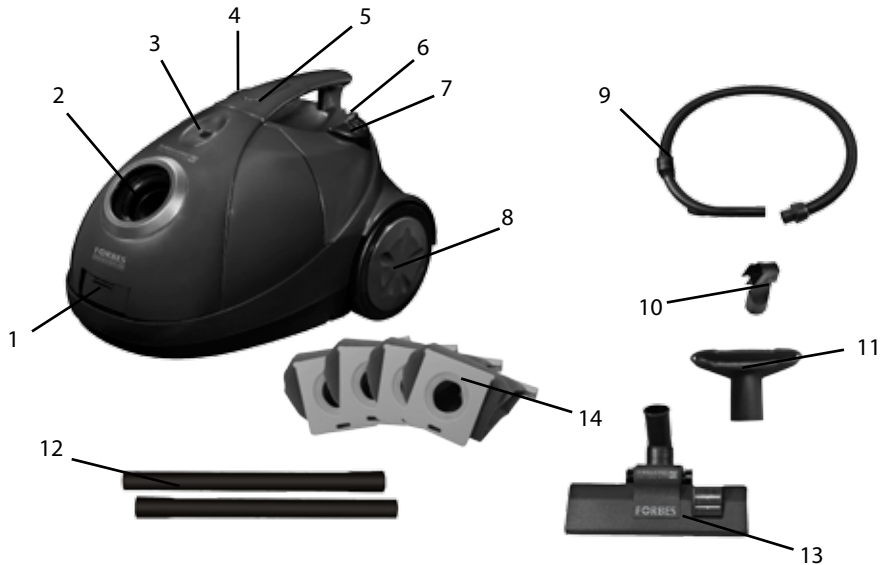
1. Before using the appliance for the first time, carefully read the operating and safety instructions and adhere to these at all times.
2. Please keep these instructions after reading them and be sure to include them in case you pass along this product to someone else.

Happy Cleaning.

## INDEX

1. Making you familiar with Quick Clean DX	2
2. Using the Quick Clean DX	3
3. Accessories	3
4. General Safety Instructions	4
5. Maintenance	6
6. Cleaning and Care	6
7. Trouble shooting	7
8. Claims & Warranties	10

1. Making you familiar with Quick Clean DX



1. DUST CONTAINER RELEASE BUTTON	8. WHEEL
2. AIR INTAKE	9. FLEXIBLE HOSE WITH SUCTION POWER SLIDE
3. DUST FULL INDICATOR	10. CREVICE NOZZLE 2-IN-1
4. BUTTON TO UNRAVEL THE POWER CORD	11. UPHOLSTERY NOZZLE/BRUSH
5. HANDLE	12. EXTENSION TUBE
6. STORAGE POSITION (FLOOR BRUSH RAIL TO FIX THE FLOOR AND CARPET BRUSH AND EXTENSION TUBES)	13. FLOOR AND CARPET BRUSH
7. ON/OFF BUTTON	14. 4 DUST BAGS



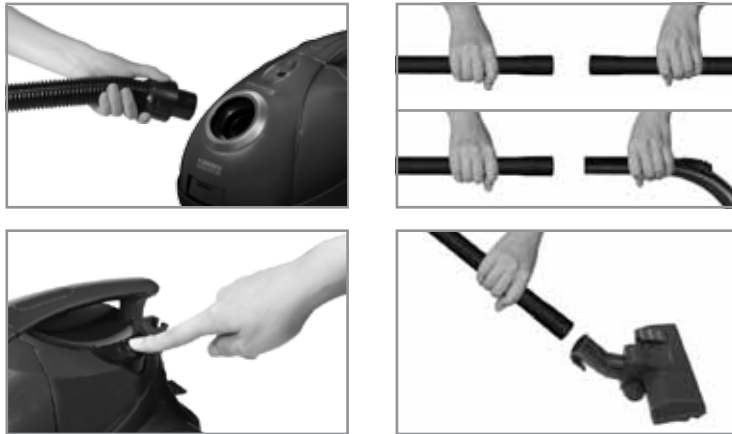
Always turn off and unplug the vacuum cleaner before performing maintenance or cleaning.

Please check all parts for possible damage prior to use.  
Damaged parts may be dangerous.

## 2. Using the Quick Clean DX

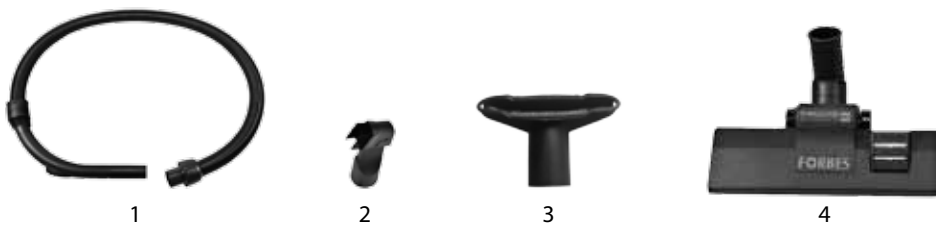
To use the vacuum to clean, simply insert the desired accessory into the air intake and press the ON/OFF button to switch ON.

To use the flexible hose to clean, attach the adapter to the hose end and insert it into the air intake. Insert the desired accessory into the other end of the flexible hose.



## 3. Accessories

1. Flexible hose: Gives you the flexibility to reach hard-to-clean areas.
2. Crevice brush: For cleaning corners, crevices.
3. Upholstery brush/ Nozzle: Helps to clean cots, curtains, sofa etc.
4. Floor and carpet brush: For cleaning hard floor surfaces as well as tough-to-clean carpets with same efficiency.



#### 4. General Safety Instructions

- Read all the instructions before using this appliance.
- Before use always make sure that the voltage of the appliance corresponds to that of the mains supply. Use only household outlets. Never use extension cord's power sources. If you are not sure of your home's voltage supply, consult a qualified electrician. Connecting the appliance to a higher voltage than indicated may result in damage to the appliance or injury. Do not alter the plug in any way.
- A damaged appliance can be dangerous. Check the packaging, the appliance and accessories for any signs of damage. Do not use a damaged appliance.
- Do not use this appliance for any other use than that for which it is intended (household use). If the appliance is not working as it should, has been dropped, damaged, left outdoors, come into contact with or immersed in water, take it to a service centre to have it checked by a qualified electrician.
- Do not use on people, on animals, outdoors or on wet surfaces. Only use on dry surfaces.
- Only use the appliances as described in this manual. Use only recommended accessories.
- The manufacturer cannot be held responsible for damage caused by non-compliance with these 'Safety Warnings & Instructions'.
- Do not allow the appliance to be used as a toy. Close attention is necessary when used by or near children.
- Do not pull or carry by the cord, use the cord as a handle, close a door on the cord or pull the cord around sharp edges or corners.
- Do not run the appliance over the cord. Keep the cord away from heated surfaces.
- Do not unplug by pulling on the cord. To unplug, grasp the plug, not the cord.
- Do not handle the plug or appliance with wet hands.

- Keep hair, loose clothing, fingers and all parts of the body well away from openings and moving parts. Use extra care when cleaning on stairs, uneven, unlevelled or unstable surfaces.
- This appliance should not be used to clean, pick up or retain any hazardous materials.
- Do not use to pick up flammable or combustible liquids, such as gasoline, or use in areas where they may be present.
- Do not use the appliance to pick up liquid, this could impair the electrical safety of the appliance. Wait for freshly shampooed carpets to dry.
- Do not pick up anything that is burning or smoking, such as cigarettes, matches, or hot ashes. Do not pick up sharp objects.
- Do not use this appliance to pick up toner dust. Toner, such as that used in printers and photocopiers can conduct electricity.
- Always turn off the appliance before connecting or disconnecting the accessories.
- Do not turn on or attempt to operate the appliance unless dust bag, dust cup, filter and/ or exhaust filter are correctly in place.
- Monitor the dust full indicator and empty and clean it at least once a month or when the Max-mark level has been reached.
- Do not use the appliance without accessories attached. The rim could be damaged and injuries could result from sharp edges.
- Do not install this product on hot surfaces, or close to temperatures of more than 40°C.
- If you pass this product on to another person, be sure to include the operating manual. Keep this manual in a safe place.
- This appliance is not intended for use by persons (including children) with reduced physical, sensory or mental capabilities or lack of experience and knowledge, unless they have been given supervision or instruction concerning use of the appliance by a person responsible for their safety.
- Children should be supervised to ensure that they do not play with the appliance.

## 5. Maintenance

- A damaged power cord must only be replaced by an authorized service agent.
- Do not leave the appliance plugged in. Unplug from the outlet when not in use and before servicing.
- Do not use with any opening blocked; keep free of dust, lint, hair, and anything that may reduce air flow. Do not put any object(s) into openings.
- Clean only with a dry or slightly damp cloth when disconnected from the power supply. Never immerse in water.
- The plug connectors must not come in contact with water. These items may only be cleaned with a dry cloth, no moisture must touch them.
- Do not attempt any repairs other than performed by an authorized service agent.
- The manufacturer cannot be held responsible for any work performed by an unauthorized service person.

## 6. Cleaning and Care

### Cleaning the filter

The dust cup should be emptied and the filter cleaned after each use, or at least on a monthly basis. To do so, the following steps should be followed.

1. Press the release button to remove the dust bag and filter assembly from the main body of the vacuum cleaner. Additionally, remove the small sponge motor filter.
2. Remove the main filter from the housing.
3. Tap the loose dust away from both filters.
4. Rinse with luke - warm water.
5. Stand all parts in free air to dry.
6. When completely dry, reassemble the filter and dust bag and replace the motor filter. Reattach the assembly to the main body.

### Warning:

1. Never operate the appliance without the dust filter and dust bag in their correct position. Always make sure that the appliance is not connected to any power supply when performing any cleaning or maintenance activities.
2. Always ensure that both filter and dust bag are totally dry before placing them in the appliance. Always unplug the appliance from the mains supply socket after use and before cleaning.

## 7. Troubleshooting

Problem	Possible cause	Possible solution
The appliance does not switch on.	There is no power in the mains supply socket.	Check fuse or cut-out switch. Replace the fuse or reset the switch.
The appliance has weak suction power.	dust bag is full.	Empty the dust bag.
The dust escapes from the appliance.	Filter is not installed correctly.	
The brushes will not pick up any dust.	Extension tube is clogged.	Remove the tube and/or brushes. Remove the obstruction.
Heat produced during use.	A small amount of heat is normally produced by the vacuum during use.	

### Technical Specifications:

Input voltage: 230V,AC,50Hz

Power (IEC): 1200W

Suction (at Mean Sea Level): 1700mm of WC(@MSL)

Unit weight: 3.6kg

Dimensions: 330mm×230mm×210mm



**BUSINESS REPLY CARD**

Postage  
will be  
paid by  
addressee



PERMIT NO. :331.  
Prabhadevi RO 19104

TO  
EUREKA FORBES LIMITED  
RO.BOXNO. 19104  
PRABHADEVI R O.  
MUMBAI-400 025

## WARRANTY CARD

**1** YEAR  
WARRANTY

To be retained by the customer.

No.

Unit / Serial No. (MC): \_\_\_\_\_

Customer's Name and Address: \_\_\_\_\_

\_\_\_\_\_

Phone (Residence): \_\_\_\_\_ (Office): \_\_\_\_\_

Invoice No.: \_\_\_\_\_

Date of Purchase: \_\_\_\_\_

Dealer's Stamp & Signature:

**FORBES**  
**QUICK CLEAN DX**  
Powerful Daily Use Vacuum Cleaner.

## WARRANTY CARD

**1** YEAR  
WARRANTY

JUST FILL IN THE WARRANTY CARD AND MAIL IT TO US WITHIN 7  
DAYS FROM THE DATE OF PURCHASE.

Date of Purchase: - - - - -

(Please help us to understand you better. Just fill in the details or tick the appropriate boxes, wherever provided. Thank you.)

My Name: \_\_\_\_\_

My Age  18-25  25-30  30 + My Occupation: \_\_\_\_\_

My approx. monthly household income (Rs.)  Above 4,000  Above 8,000  Above 15,000

I own the following household appliances (please specify brand/s).

Air Purifier \_\_\_\_\_  Water Purifier \_\_\_\_\_  Microwave Oven \_\_\_\_\_

Others: \_\_\_\_\_

My Residential Address: \_\_\_\_\_

City: \_\_\_\_\_ State: \_\_\_\_\_ Pin: \_\_\_\_\_

My Tel. No. (Residence): \_\_\_\_\_ (Office): \_\_\_\_\_

My Signature \_\_\_\_\_

Dealer's Stamp & Signature:

**FORBES**  
**QUICK CLEAN DX**  
Powerful Daily Use Vacuum Cleaner.

## Warranty

Forbes Quick Clean DX Vacuum Cleaners are warranted against defects arising out of faulty design, workmanship and materials, for a period of 12 months from the date of the invoice, subject to the following conditions:

1. The customer will notify the company promptly about any defects noticed and give the company or its authorized dealer sufficient opportunity to inspect, test and remedy them, for which the customer will deposit the goods, if necessary, with the company's office service centre along with the original invoice, in the city where they are sold.
2. Inspection and test report of the company's office/service centre will be treated as final and binding under the warranty for determining defects, repairs/alterations required or carried out, or certifying working of the goods thereafter.
3. The company or its authorized dealer will be entitled to retain any defective parts replaced under the warranty.
4. The company's liability under the warranty will be limited only to defects which occur under the conditions of normal operation and under proper use. It excludes defects occurring because of abuse, faulty care or maintenance, repairs/ alterations to goods or parts by others, use on electrical supply for which the goods are not designed or to damage caused by lighting or other electrical disturbances.
5. Components subject to wear, such as flexible cable, carbon brushes and accessories, are not covered by this warranty.
6. The customer will have no claim under this warranty in respect of any personal injury, damage to property or consequential damages, or for utilisation of the goods not in accordance with the user manual.

*Note: The undernoted expressions should have the following meanings:*

'The goods' shall mean goods described in the purchase agreement.

'The customer' shall mean the original purchaser under the purchase agreement.

'The company' shall mean 'EUREKA FORBES LIMITED'.

NB: For registration of the warranty, please fill up the details in the warranty card and mail the same to Eureka Forbes Limited.

## Post-Warranty

1. The customer may be offered a yearly service contract at prevailing company rates and terms.
2. In case the customer does not wish to enter the service contract, he has the option of calling our service centre and having his Forbes Quick Clean DX service on an actual basis i.e. by paying for labour cost and spares needed to attend to that Service/ Compliant call the prevailing company rates. Such service will be rendered by the company in towns places where the company has its Service Centers.

FOR SERVICE, PLEASE CONTACT THE DEALER FROM WHERE  
YOU HAVE PURCHASED YOUR FORBES QUICK CLEAN DX

Customer Response Centers

NORTH : A-34, 1st Floor, Kailash Colony, New Delhi — 110048. Tel: 011-2923 1570  
(10 Lines)

CENTRAL: Shop No. 203 & 204, 2nd Floor, The Gunman II 'A Block, Opp. Tagore  
Public School, Vaishali Nagar, Jaipur— 302021. Tel: 0141-2352664,5100995.

EAST : South End Conclave, 2nd Floor, 1582, Rajdanga Main Road, Kolkatta-700 107.  
Tel: 033-24428933/34/35.

WEST : 14 A, Paper Box Estate, Ground Floor, Mahakali Road, Andheri (East), Mumbai  
— 400 093. Tel: 022-2687022/221.

SOUTH : No. 111, 2nd Floor, Hafeeza Chambers, K.H. Road, Bangalore — 560 027.  
Tel: 080-22109492//96, 411 38380.

SOUTH : C&D — 5, II IV, Anmol Palani, No. 88, G.N. Chetty Road, T Nagar, Chennai  
— 600017. Tel : 044-66543544/55.

For service needs

Please contact our Zonal Offices / Eurohelpline at Ahmedabad,  
Bangalore, Chennai, Kolkata, Mumbai, New Delhi on 39883333.

Imported By:

EUREKA FORBES LIMITED

B1/B2, 701, 7th Floor, Marathon Innova, Marathon NextGen,  
Off Ganpatrao Kadam Marg, Lower Parel, Mumbai – 400013, India

Marketed and Serviced By:

EUREKA FORBES LIMITED

B1/B2, 701, 7th Floor, Marathon Innova, Marathon NextGen,  
Off Ganpatrao Kadam Marg, Lower Parel, Mumbai – 400013, India